

KAPSABET HIGH SCHOOL

MARKING SCHEME

Kenya Certificate of Secondary Education (K.C.S.E)

INSTRUCTIONS TO CANDIDATES:

- Answer ALL the questions in section A
- Answer question 16 (compulsory) and any other three questions from section B.

For Official Use Only

Question	Maximum score	Actual score
1-16		
17		
18		
19		
20		
TOTAL SCORE		

SECTION A:(40 MARKS)

ANSWER ALL QUESTIONS IN THE SPACES PROVIDED

1. i) Explain the emerging trends in microcomputer technology in relation to Size (1mk)

-PCs are becoming small and portable, e.g. personal Digital Assistant (PDA). (correct @1mk)

ii) Mention two Analogue devices (2mks)

-Computer used to control a flight Simulator for training pilots

-Bathroom scale

-Thermometer

-Speedometer

-Post- office scale

-A radio with a knob that slides in a slot to increase volume

2. i Identify and briefly describe three advantages of using computers in banking (1½mks)

-Speed and accuracy

-Easy to access information

-Easy to update records

-Requires less space for storage

-Improves data security and privacy (first 2@2mks)

ii) State two advantages of using a mouse instead of a keyboard. (1mk)

- The mouse is easy & convenient to use.

- Modern software includes an option to use it.

- It selects a position on screen much more quickly than a keyboard.

(first two correctr @ 1mk, ½ mk each)

3. State two reasons why Magnetic tapes are not commonly used as computer data storage medium today (1mk)

-Are slow when retrieving data. This is because of the linear storage of data on the tape.

-Do not fully use their recording surface due to inter- record Gaps

(first 2 correct @ 1mk, ½ mk each)

4. i) Give two advantages of the higher number of pixels per square centimeter (1mk)

- Higher screen resolution

-Displays of sharp & clear images

-The screen is able to display a higher number of different images

(first 2 correct @ 1mk, ½ mk each)

ii) Differentiate between Data interface cable and power cable (1mk)

Data interface cable -These are special cables that connect all the peripheral devices to the motherboard and the CPU. They transmit data signals and information to and from the devices

Power cable - Cable that supplies power to devices

(correct @ 1mk)

iii) Explain two differences between serial and parallel communication ports of a computer

(2mks)

-Serial ports have 9 pins, while parallel ports have holes for 9 or 25 pins

-Parallel cables transmit several bits of data simultaneously, while serial cables transmit One bit at a time

-Serial cables are slower than parallel cable

-Serial cables allow for 2 ways communication (i.e. communication to and from the computer and the device connected to it) while parallel cables usually offer 1- way communication.

(first 2 @ 2mks)

5. i) What is line spacing as used in word processing? (½mk)

-The vertical distance between two text lines in a document (correct @ ½ mk)

ii) Describe any two line spacing specification used in Microsoft Word. (1mk)

i)Single space – accommodates the largest font in a line

ii)1.5 line space- 1 ½ time that of single line spacing

iii)Double – twice that of single line spacing

iv)Exactly – a fixed line spacing that word does not adjust

v)At least – the minimum line spacing that is needed to fit the largest font or graphic on the line.

vi)Multiple- a line spacing that is increased or decreased by a percentage that you specify
(first 2 @ 2mks, each ½ mk)

iii) Name the two documents used in mail merge (1mk)

- main document

- Data source

(correct @ 1mk)

iv). With reference to the concept of graphics as used in Microsoft word. Explain the difference between object linking and embedding? (1mk)

-In linking, the object imported can only be edited in the original application from which it was created.

-In embedding, the object imported becomes part of the current application and can be edited there.

(correct @ 1mk)

6. Who am I? (3mks)

i) Am is skilled in software/program development as per requirement and technical operations of computer hardware. I also develop and update both system and application software together with the associated documentations.

-A Software developer/Engineer (correct @ 1mk)

ii) Am is skilled in designing computer hardware and also improves on existing ones.

-A Computer engineer (correct @ 1mk)

iii) I maintain, update & modify information on the websites to meet new demands by the users. I also monitor the access & use of internet connection by enforcing security measures

-A Web or Network Administrator (correct @ 1mk)

7. During the COVID 19 pandemic, the government advised the citizens to use electronic funds transfer and other popular mobile phone money transactions to make payments.

i) State how the above method of conducting business would help to curb on the spread of the disease (2mks)

-Instant – One receives the money –During the lockdowns people were able to send financial support easily

-Used as a measure to quarantine or curb spread of COVID 19 which spreads easily through hands and infected items or surfaces

-Digital payments allow people to access goods and services while in quarantine or social distancing.

-digital payments were such an alternative to boosting or sustaining e-commerce in the country.

- Local Governments and well-wishers were able to fundraise and distributed vouchers

Businesses experience some level of growth with e-commerce and online payments .

ii) What is the meaning of electronic funds transfer? (1mk)

EFT (electronic fund transfer) - us used to move money from one account to another. Or from case of mobile phone transactions .The transactions are completed electronically, and the two accounts can be at the same financial institution or different financial institutions. Term "EFT" is an umbrella term that covers a broad range of electronic payments

8. Define the term dual booting as used in computing. (1mk)

A dual boot is when you INSTALL two operating systems on one computer and being able to choose which one to boot
(correct @1mk)

9. Differentiate between cropping and grouping. (2mks)

Cropping is removing unwanted parts of a graphics

Grouping is combining more than one object to be manipulated as one

(correct @ 2mks)

10. Other than pseudocode, state two tools that can be used to present an algorithm (2mks)

- flow chart
- Decision Tables
- Decision Trees

(any two @2mks)

11. Differentiate between a deadlock and interrupt as used in operating system. (2mks)

Deadlock refers to a situation whereby a particular job holds a resource and refuses to release it yet it is requesting for a resource held by another job

Interrupt is a break from the normal sequecial processing of instructions in a program

(Correct @2mks)

12. (a) Securem is a company that deals with providing security services to its clients. Name any two ways the company can protect its computer network from hackers. (2mks)

- Log files

- Data encryption
- Use of passwords
- Firewalls (first 2 @2mks)

(b) State **three** characteristics of a suitable password. (3mks)

- Easy to remember
- Hard to guess
- Should be a combination of letters and numbers
- Should be a minimum of 8 characters (first 3@3mks)
-

13. During system development the system analyst should consider the correct requirement specifications for the new system. State any **four outcomes** that may result from using incorrect requirement specifications. (3mks)

- More costs than was projected
- The system will be delivered later than schedule
- The system will not meet user's expectations
- The cost of maintaining and enhancing the system may be excessively high
- The system may be unreliable and prone to errors and downtime

(first 4 @ 4mks)

14. (a) Define the term Computer Aided Design. (1mk)

A system of programs and workstations used in designing engineering, architectural and scientific models ranging from simple tools to building. (correct @ 1mk)

14.(b) List two advantages of using Computer Aided Design. (2mks)

- The length of time taken to draw is reduced
- Easier to make changes or update the original design
- Duplicates of the design are easy to produce, distribute to various interested parties
- It is easier to view the end product before it is designed (first 2 @2mks)

15. Explain two arithmetic errors that may occur during computerised data processing. (2mks)

- Truncation error
- Rounding off error
- Overflow error (state @1/2 mk , explain @1/2 mk, total 1mk each)

SECTION B: 50 MARKS

Answer Question 16 and any other three questions from this section in the spaces provided.

16. (a) Give **two** examples of syntax errors in programming. (2mks)

- Punctuation mistakes
- Improper naming of variables
- Wrong spellings of user defined and reserved words. (first 2@2mks)

16.(b) Scrabble is a word game where the players are awarded points by creating words from a combination of letters each of which carry a different point value. A player is awarded the points for creating words from the combination. Write a pseudocode to read a letter and output the value equivalent to that letter from the following table. (8mks)

LETTER	VALUE
A,E,I,L,N,O,R,S,T,U	1
D,G	2
B,C,M,P	3
F,H,V,W,Y	4
K	5
J,X	8
Z,Q	10

START..... $\frac{1}{2}$ MK

READ letter.....1 MK

CASE letter of1 MK

‘A’,‘E’,‘I’,‘L’,‘N’,‘O’,‘R’,‘S’,‘T’,‘U’:marks=1;..... $\frac{1}{2}$ MK

‘D’,‘G’:marks=2;..... $\frac{1}{2}$ MK

‘B’,‘C’,‘M’,‘P’:marks=3;..... $\frac{1}{2}$ MK

‘F’,‘H’,‘V’,‘W’,‘Y’:marks=4;..... $\frac{1}{2}$ MK

‘K’:marks=5; $\frac{1}{2}$ MK

‘J’,‘X’:marks=8; $\frac{1}{2}$ MK

‘Z’,‘Q’:marks=10; $\frac{1}{2}$ MK

ELSE

PRINT "INVALID CHARACTER" $\frac{1}{2}$ MK

END CASE

PRINT marks1MK

STOP..... ½ MK

START/STOP >1MK

INPUT > 1MK

CORRECT USE OF SELECTION(CASE) > 1MK

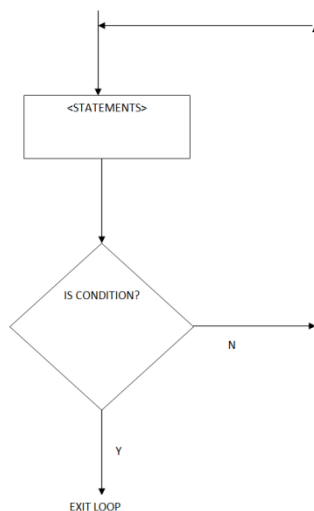
EACH CONDITION > ½ MK

OUTPUT > 1MK

(c) Classify the following programming languages according to their category: (3mks)

Programming language	Category
HTML	Web scripting (½mk)
JAVA	OOP (½mk)
JAVASCRIPT	Web scripting (½mk)
PASCAL	3GL (½mk)
VISUAL BASIC	4GL (½mk)
LISP	5GL (½mk)

(d) With aid of a diagram, explain the “Repeat Until” construct as used in structured programming (2mks)



- the program first executes then tests the condition and continues looping until the condition turn to true

- The program tests and then executes until the condition becomes true

(diagram @1mk, correct explanation @ 1mk)

17. (a) State the **stage** in system development life cycle where each of the following activities are carried out:

i. Identifying shortcomings of a system. (1mk)

Problem definition (correct @1mk)

ii. Preparing the system migration plan (1mk)

Implementation stage (1mk)

iii. Identifying the technologies that may be used in the proposed system. (1mk)

system analysis(correct @1mk)

(b) State **three** roles of a programmer in system development life cycle. (3mks)

- Coding/writing code for the new program
- Turning system specification into an information system
- Modify existing programs to meet changes in information processing needs
- Installing a system
- Testing the new system
- Developing technical guide/documenting (first three @ 3mks)

(c) E-mail technology has become a very important part of today's communication. **Explain** any **three** problems associated with using e-mail technology for communication. (6mks)

- Threat to privacy
- Messages can be sent to many people without their consent
- Email attachments can be sources of viruses
- Not available to all/technology illiteracy
- Emails can be unsolicited/spam mail
- Encourage illicit communication such as immoral behaviour (first 3 @2mks each)

(d) Sarafina wants to download her favourite movie from YouTube. State any **three** factors that may determine how long it will take her to complete the download. (3mks)

- Other activities that may be running in the computer
- Bandwidth of the media used
- Size of the video
- Other restrictions enforced in the computer

(first 3 @ 3mks)

18. The following Digital Club Member details were to be entered in a database: Name, Date of registration, Registration fee and Class.

(a) Prepare a suitable structure showing field names and their field types (4mks)

Field	Data type
-------	-----------

Name	Text (✓1mk)
Date of registration	Date(✓1mk)
Registration fee	Currency or Number(✓1mk)
Class	Text(✓1mk)

(b) Name one other field that the Club Patron may need to add to uniquely identify the records (1mk)

Member Number (✓1mk)

(c) Write the statement that can be used to select members of the class form 3 (2mks)

	Name	Date of registration	Registration fee	Class
Criteria/ Expression				Form 3 (✓1mk)

(d) The following is an extract from a spreadsheet created to manage sales. Use it to answer the questions that follow.

	A	B	C	D
1	ITEM NAME	UNIT PRICE	UNITS SOLD	
2	HDD 300 GB	7,500	2	
3	Optical Drive	4,500	8	
4	DELL Latitude core i5	44,500	3	
5	DDR4 8GB RAM	10,000	4	
6	Lenovo Yoga Smart Tab	28,953	1	

(i) Write a formula that will compute the number of items whose unit price whose price more than 10,000 (3mks)

**=COUNTIF(B2:B6,">10,000") OR @COUNTIF(B2:B6,">10,000") OR
+COUNTIF(B2:B6,">10,000")**

- ❖ (B2:B6) Argument range @1 mark
- ❖ (>10,000) Criteria @ 1 mark
- ❖ All Formula correct @ 1 mark

(ii) If the formula $=B2*C\$2$ was placed in D2, state the output if copied to D3 (2mks)

❖ **Formula is $=B3*C\$2$ @ 1 mark**

❖ **$=4,500*2$**

❖ **$= 9,000$ @ 1 mark**

(iii) Write the cell referencing used in c(ii) above

(1mk)

Mixed cell referencing

(iv) Write the data type that is stored in cell C5 and A6 respectively (2mks)

C5-Value

A6- label

19. a) Define the term attenuation as used in networking and data communication (1mk)

It refers to the weakening of signal strength as it progressively moves from one point to another on the transmission media.

(b) The following are figures of networking cables. Identify each.

(2 marks)



Figure 1

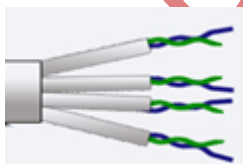


Figure 2

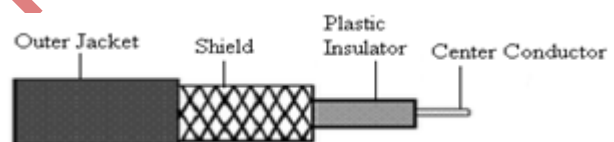


Figure 3

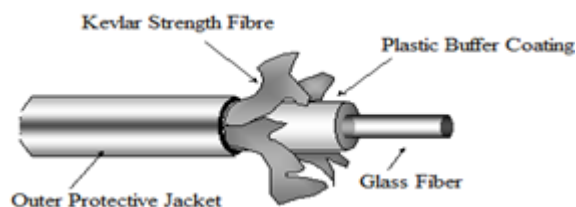


Figure 4

Figure 1: Unshielded Twisted Pair (UTP)

Figure 2: Shielded Twisted Pair (STP)

Figure 3: Coaxial

Figure 4: Fibre optic

(Each @ ½ mark)

c) (i) Give TWO examples of network software (2mks)

- ❖ **Network operating system**
- ❖ **Network protocols**

(ii) In a network setup, list any TWO items that may be referred to as data terminal equipment.

(2mks)

- ❖ **Computer**
- ❖ **Printer**
- ❖ **Visual Display Unit**

d) Explain the following terms as used in networking (4mks)

(i) Remote Communication

It involves transmission of data signals between two communication devices located at different geographical location, through which people can be able to share ideas over network

(ii) Distributed processing

This involves the subdivision of a process into several subprocess then each subprocess can be processed at a different site co-currently hence speeding up the entire process

e) State FOUR functions of a server in a network (4 marks)

It allows sharing a network printer

It allows communication between the various workstations in a network

It provides control access to available storage devices in network

It allows sharing of communication. Files in the network

It provides the transfer of files from one workstation to another workstation in the network.

20. (a) **Determine** the binary equivalent of the octal number 253243. (2 marks)

0100101011010100011

(b) **Carry** out the following binary arithmetic using ones complement. In each case leave your answer in base 10.

(i) $10_{10} - 10_8$

(5 marks)

Binary equivalents table

Binary Bits	Decimal equivalent
000	0
001	1
010	2
011	3
100	4
101	5
110	6
111	7
1000	8
1001	9
1010	A
1011	B

$10_{10} - 10_{10}$

$10_8 - 001000$

Make the digits of the values the same

001010

-001000

Complement the negative value

110111

Add the complemented value to the positive value

001010

+ 110111

(1)000001

Add the overflow digit to the LSD

000001

+ 1

Ans 000010₂

Convert it to decimal

2₁₀

(i) 2B_H-9_H

(6 marks)

2B_H - 00101011

9_H - 1001

00101011

- 1001

Make the digits of the values the same

00101011

- 00001001

Complement the negative value

11110110

Add the complemented value to the positive value

$$\begin{array}{r}
 00101011 \\
 + \quad 11110110 \\
 \hline
 (1)0010000
 \end{array}$$

Add the overflow to the LSD

00100010₂

Convert the answer to decimal

34₁₀

(c) **Arrange** the following numbers in ascending order.

(2 marks)

10₁₆, 10₁₀, 15₈, 1011₂

10₁₀, 1011₂, 15₈, 10₁₆,

KAPSABET MOCK 2023