



# MASENO SCHOOL

Kenya Certificate of Secondary Education 2020

443/1 -

**AGRICULTURE**

**- Paper 1**

**DEC. 2020**

**- 2 hours**

**443/1-Agriculture- P1**

Friday 11 /12/2020

Time 11:00am-1:00pm

## THE MASENO SCHOOL MOCK

Name ..... Index Number.....

Candidate's Signature ..... Date .....

### INSTRUCTIONS TO CANDIDATES:

- (a) Write your name and index number in the spaces provided above.
- (b) Sign and write the date of examination in the spaces provided above.
- (c) This paper consists of **THREE** Sections A, B and C.
- (d) Answer **ALL** questions in Section A and B.
- (e) Answer **ANY** Two questions in Section C in the spaces provided.

### **FOR EXAMINERS USE ONLY**

| Section | Question           | Maximum score | Candidates score |
|---------|--------------------|---------------|------------------|
| A       | 1 - 20             | 30            |                  |
| B       | 21 – 23            | 20            |                  |
| C       | 24 – 26            | 20            |                  |
|         |                    | 20            |                  |
|         | <b>Total score</b> | <b>90</b>     |                  |

**SECTION A (30MARKS)**

*(Answer all the questions in this section in the spaces provided)*

**1) What is a vegetable? (1mark)**

.....  
.....  
.....

**2) List three tertiary operations carried out in the farm (1 ½marks)**

.....  
.....  
.....

**3) Highlight three ways through which minimum tillage is achieved (1 ½marks)**

.....  
.....  
.....

**4) State two disadvantages of too much nitrogen in crop production (1mark)**

.....  
.....  
.....

**5) State four factors used in classification of inorganic fertilizers (2marks)**

.....  
.....  
.....  
.....  
.....

**6) Highlight four aspects of rainfall that affects agricultural production (2marks)**

.....  
.....  
.....  
.....  
.....

7) Give two changes that would indicate an improvement of labor efficiency on a farm (1mark)

.....  
.....  
.....

8) State the law of substitution (1mark)

.....  
.....  
.....

9) Outline three ways by which afforestation helps in land reclamation (1½marks)

.....  
.....  
.....

10) Outline any four steps followed in land adjudication (2marks)

.....  
.....  
.....  
.....  
.....

11) State any four characteristics of trees used in agroforestry (2marks)

.....  
.....  
.....  
.....  
.....

12) List three advantages of tenancy system (1 ½marks)

.....  
.....  
.....

.....  
.....  
**13) Under what conditions do opportunity cost exist as zero? (1 ½marks)**  
.....  
.....  
.....  
.....  
.....  
.....

**14) Apart from broadcasting as a method of fertilizer application, list four other fertilizer application methods (2marks)**  
.....  
.....  
.....  
.....  
.....  
.....

**15) Highlight three importance of tissue culture in crop propagation (1 ½ marks)**  
.....  
.....  
.....  
.....  
.....  
.....

**16) Highlight four disadvantages of using seeds as a planting material (2marks)**  
.....  
.....  
.....  
.....  
.....  
.....

.....  
**17) State four factors affecting rooting of cuttings (2marks)**

.....  
.....  
.....  
.....  
.....  
.....

**18) Explain what is meant by the following terms; (1 ½ marks)**

i) Chitting

.....  
.....  
.....

ii) Certified seed

.....  
.....  
.....

iii) Seed dressing

.....  
.....  
.....

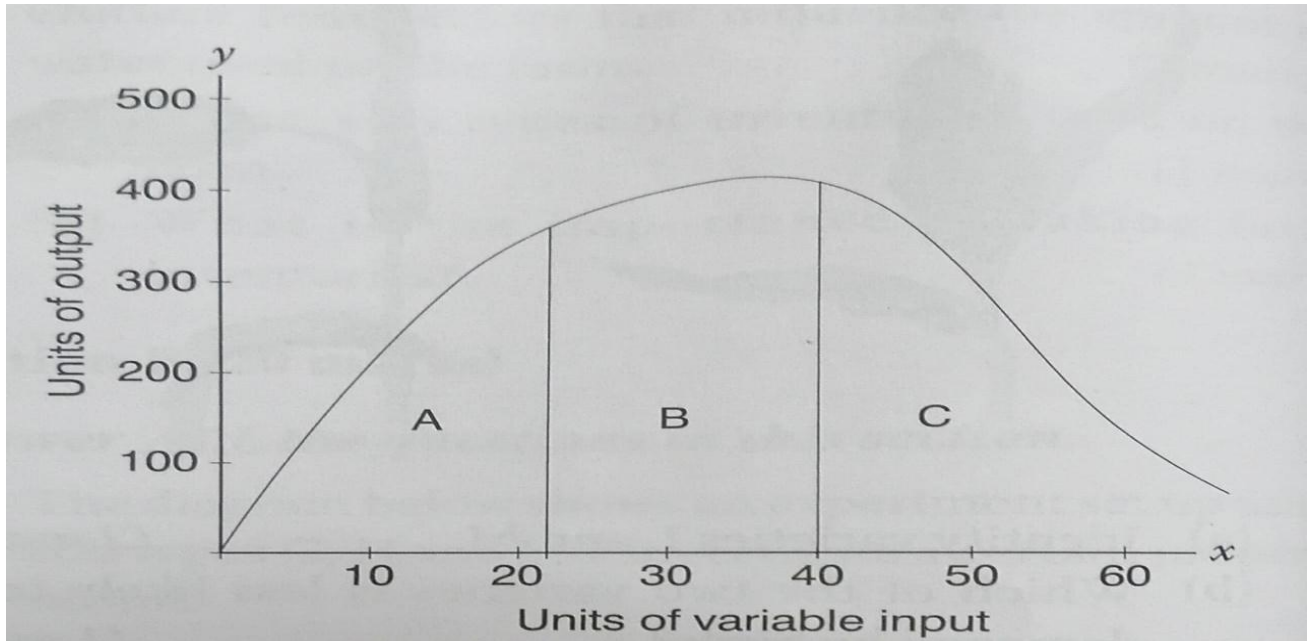
**19) State any three significance of nursery in crop production (1 ½ marks)**

.....  
.....  
.....  
.....  
.....  
.....

**SECTION B (20MARKS)**

*Answer all the questions in this section in the spaces provided.*

20) The diagram below shows a graphical representation of an economic law.



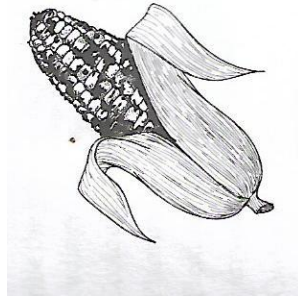
i) Name the law depicted by the curve above (1mark)

.....  
.....  
.....

ii) Explain what is happening in each of the zones marked A,B and C (3marks)

.....  
.....  
.....  
.....  
.....  
.....  
.....  
.....  
.....  
.....

21) The diagram below show a maize cob which has been attacked by a certain disease. Study it and answer the questions that follow.



i) Identify the disease ( 1mark)

.....  
.....

ii) Name the causal organism of the disease (1mark)

.....  
.....  
.....

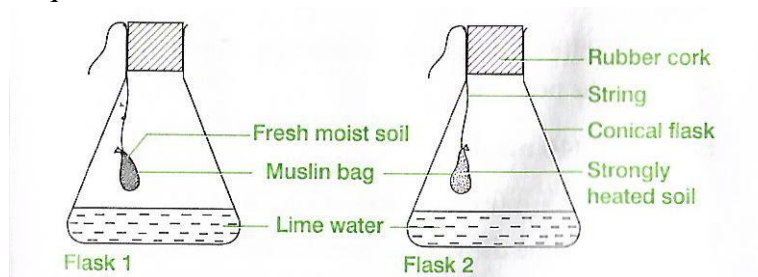
iii) State two cultural method of controlling the disease (2marks)

.....  
.....  
.....  
.....  
.....  
.....





23) The diagram below shows an experiment that was carried out by form one students. Study it carefully and answer the questions that follow.



i) What was the aim of the experiment? (1mark)

.....

.....

.....

ii) What observation did the students make in the two flasks at the end of the experiment (2marks)

.....

.....

.....

iii) Give a reason for the observation made in flask 1 (1mark)

.....

.....

.....

**SECTION C (40MARKS)**

*Answer any two questions from this section*

24) Describe the factors that determine the quality of Farm Yard Manure (5marks)

i) Explain why green manure is not commonly used by farmers (4marks)

ii) Explain the soil conservation measures that can be used to conserve soil on a sloping farm land (8marks)

iii) State three ways by which soil PH influences soil fertility (3marks)

- 25) i) State and explain the agricultural support services available to farmers (10marks)
- ii) Explain the various ways a farmer may adjust to risk and uncertainties (8marks)
- iii) State two factors that influences the market forces (2marks)

- 26) i) State and explain 5 causes of land fragmentation in Kenya since independence (10marks)
- ii) Give reasons for the success of settlement schemes in Kenya after independence (5marks)
- iii) State the contribution of settlement schemes to agricultural development (5marks)

.....

.....

.....

.....

.....

.....

.....

.....

.....

.....

.....

.....

.....

.....

.....

.....

.....

.....

.....

.....

.....

.....

.....

.....



.....

.....

.....

.....

.....

.....

.....

.....

.....

.....

.....

.....

.....

.....

.....

.....

.....

.....

.....

.....

.....

.....

**THIS IS THE LAST PRINTED PAGE**