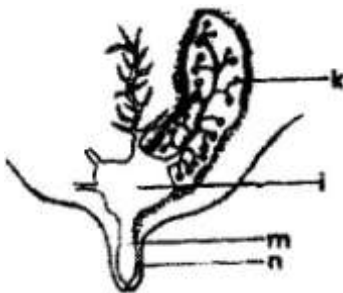


LIVESTOCK PRODUCTION (VI) – CATTLE

1. 1995

(a) The diagram below is a cross section of part of a cow's udder



Label on the diagram the parts marked k, i, m and n. (2 marks)

.....
.....
.....

(b) i) What is milk let down? (1 mark)

.....
.....

ii) Which hormone stimulates milk let down. (1 mark)

.....
.....

(c) State three practices which are carried out to control mastitis in lactating cows.

.....
.....

2. 1995

Describe the management of a dairy heifer calf from birth until it is mature for first service. (20 marks)

.....
.....
.....
.....
.....

3. 1997

a) Name any two characteristics of good quality whole milk. (1 mark)

.....
.....

b) State three advantages of artificial calf rearing. (3 marks)

.....

4. **1998**
State four qualities of clean milk. (2 marks)

.....
.....

a) Define the term colostrums (1 mark)

.....
.....

b) Explain three qualities that make colostrums suitable for newly born calves. (3 marks)

.....
.....
.....

c) Give two methods of feeding colostrums to a newly born calf. (1 mark)

.....
.....

5. **1999**
State any six practices that would ensure clean milk production (3 marks)

.....
.....

6. **2000**
State six marketing problems affecting dairy farming in Kenya. (3 marks)

.....
.....
.....

7. **2001**
Describe the management of a dairy calf using artificial rearing method from birth to weaning (20 marks)

.....
.....
.....
.....
.....
.....

8. **2007 Q6 P2**
Give three ways of stimulating milk let-down in a dairy cow. (1 ½ marks)

.....
.....

9. **2008 Q4 P2**
Differentiate between homogenization and pasteurization in milk processing (1 mark)

.....
.....

10. **2008 Q7 P2**
What is dry cow therapy? (1 mark)

.....
.....

11. **2008 Q30 P2**
a) Describe the feeding practices carried out on a calf from birth to weaning. (10 marks)

.....
.....
.....

b) Describe management practices that would ensure clean milk production in a dairy farm. (10 marks)

.....
.....
.....

12. **2009 Q5 P2**
State four advantages of artificial calf rearing in dairy cattle management (2 marks)

.....
.....
.....
.....

13. **2009 Q15 P2**
State two conditions that may inhibit milk let-down during milking (1 mark)

.....
.....

14. **2010 Q28b P2**
(b) (i) Outline **three** characteristics of clean milk. (3 marks)

.....
.....

- (ii) Explain **seven** factors that affect milk composition in dairy farming. (7 marks)

.....
.....
.....

15. **2011 Q26b P1**
b) Give a reason for each of the farm records kept on a dairy farm. (5 marks)

.....
.....

16. **2011 Q19 P1**
A dairy farmer is required to prepare 100 kg of dairy meal containing 20% Digestible Crude Protein (D.C.P). Using the Pearson's Square Method, calculate the quantity of soya bean (40% D.C.P) and rice (16% D.C.P) the farmer requires for the dairy meal. (4 marks)

.....
.....

17. **2012 Q13 P1**
Give three advantages of zero grazing in dairy farming (2¹/₂ marks)

.....
.....

18. **2012 Q14 P2**
State four practices that immediately come after complete milking in a milking shade (2 marks)

.....
.....
.....
.....

19. **2012 Q23b P2**
(b) Give the reasons why embryo transfer use should be encouraged in dairy cattle breeding. (8 marks)

.....