

LIVESTOCK PRODUCTION V – POULTRY

1. **1995**
Give three methods of controlling cannibalism in a flock of layers in deep litter system.
.....
.....
2. **1995**
List four factors that should be considered when grading eggs for marketing.
.....
3. **1998**
 - a) Describe the artificial rearing of layer chicks from day old up to the end of brooding.
.....
.....
.....
 - b) Describe the characteristics of a poor layer, which should be considered during culling
.....
.....
.....
4. **1999**
Outline any four maintenance practices, which should be carried out in a deep litter poultry house. (2 marks)
.....
.....
5. **2000**
Give four conditions that reduce the quality of eggs for hatching. (2 marks)
.....
.....
.....
6. **2001**
Give four measures that can control egg eating by hens in a deep litter system (2 marks)
.....
.....
.....
.....

7. **2002**
a) State four observations on the behaviour of chicks which would indicate that the temperature of a brooder is too high. (4 marks)
.....
.....
.....
- b) Give four advantages of deep litter system of poultry keeping. (4 marks)
.....
.....
.....
8. **2005**
List six qualities of eggs suitable for incubation (3 marks)
.....
.....
.....
9. **2005**
Describe the steps to be taken in maintaining hygiene in a deep litter poultry house. (5 marks)
.....
.....
.....
10. **2006 Q15 P2**
Mention six causes of stress to a flock of layers. (3 marks)
.....
.....
11. **2007 Q1 P2**
Give two reasons for using litter in a poultry house. (1 mark)
.....
.....
12. **2007 Q19 P2**
State four conditions that would encourage hens to eat eggs in poultry production (2 marks)
.....
.....
.....
.....

13. **2007 Q24a P2**
 a) Describe the advantages of the battery system of rearing layers. (10 marks)

.....

.....

.....

14. **2008 Q12 P2**
 What is the reason for turning eggs regularly during incubation? (1 mark)

.....

.....

15. **2009 Q17 P2**
 Why are the following conditions maintained during artificial incubation of eggs in poultry production?

(a) Proper ventilation (1 mark)

.....

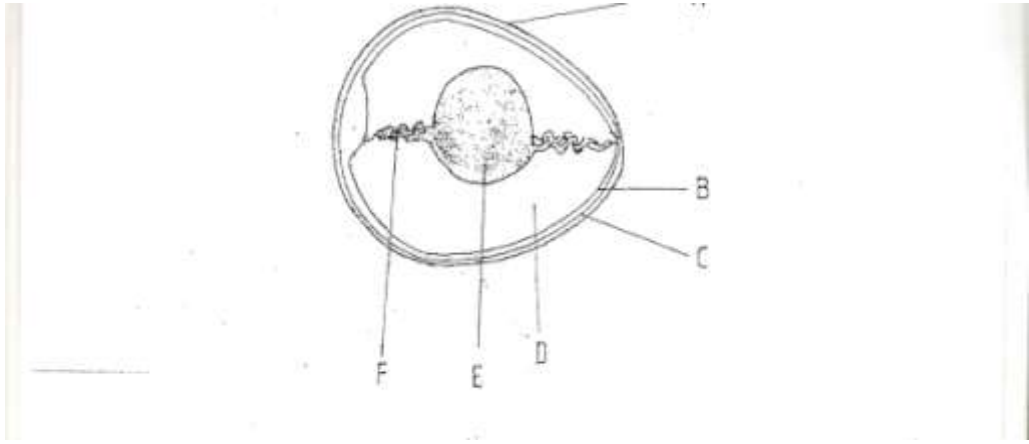
.....

(b) Relative humidity at 60% (1 mark)

.....

.....

16. **2009 Q19 P2**
 The diagram below is an illustration of an egg. Study it carefully and answer the questions that follow.



(a) Name the parts labeled B,C,D and F

B..... (1/2 marks)

C..... (1/2 marks)

D..... (1/2 marks)

F..... (1/2 marks)

(b) State two qualities of the part labelled A that should be considered when selecting eggs for incubation. (1 mark)

.....

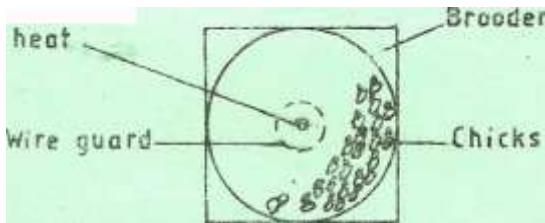
(c) What is the function of the part labelled E in a fertilized egg? (1 mark)

.....

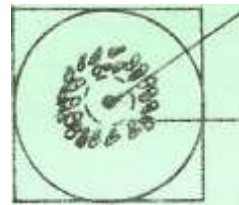
17. 2010 Q20 P2

The following illustrations show the behaviour of chicks in a brooder. Study them carefully and answer the questions that follow.

Source of



Source of heat



C

Source of heat



(a) Explain the cause of behaviour observed in chicks for each of the illustrations labelled A, B and C. (3 marks)

.....

(b) Give a reason for making the brooder wail round in shape. (1 mark)

.....

18. 2011 Q17 P2

State four signs of mite attack in poultry. (2 marks)

.....

- 19. 2011 Q24b P2**
Describe poultry management under the following sub-headings:
- i) causes of stress; (8 marks)
-
- ii) control measures for cannibalism (7 marks)
-
-
- 20. 2012 Q5 P1**
Name four farm records that should be kept by a poultry farmer. (2 marks)
-
-
-
- 21. 2012 Q2 P2**
Give **three** reasons for candling eggs in poultry production. (1½ mark)
-
-
- 22. 2012 Q10 P2**
State four causes of egg eating in a flock of layers (2 marks)
-
- 23. 2012 Q13 P2**
State three advantages of fold system in poultry rearing (1 ½ marks)
-
-
- 24. 2012 Q23a P2**
(a) Describe the management of one day old chicks in a brooder until they are eight weeks old.' (12 marks)
-
-
-
-
-
-
-