

## LIVESTOCK HEALTH II (PARASITES)

1. **1995**
- (a) Which livestock disease is transmitted by each of the following ticks? (2 marks)
- (i) Blue tick (*Boophilous decoloratus*)  
.....
- (ii) Brown ear tick (*Rhipicephalous appendicula tus*)  
.....
- (b) How many hosts does the red-legged tick (*Rhipicephalous averts*) require to complete its life cycle? (1 mark)  
.....
2. **1998:**
- (a) State four signs of infestation by external parasites in livestock? (2 marks)  
.....  
.....  
.....  
.....
3. **1999**
- (a) State four signs of infestation by external parasites in livestock? (2 marks)  
.....  
.....  
.....  
.....
- (b) Name the intermediate host for each of the following internal parasites. (2 marks)  
Tape worm (*Taenia solium*) (ii) Liver fluke (*Fasciola hepatica*)  
.....  
.....
4. **2000**
- Describe the life cycle of a three- host tick. (8 marks)  
.....  
.....  
.....  
.....  
.....

5. **2003**  
State four non-chemical methods of controlling ticks in cattle. (2 marks)

.....  
.....  
.....  
.....

6. **2004**  
Give four measures that should be taken to control tapeworms on the farm. (2 marks)

.....  
.....  
.....  
.....

7. **2006 Q9 P1**  
State four ways of controlling tsetse flies. (2 marks)

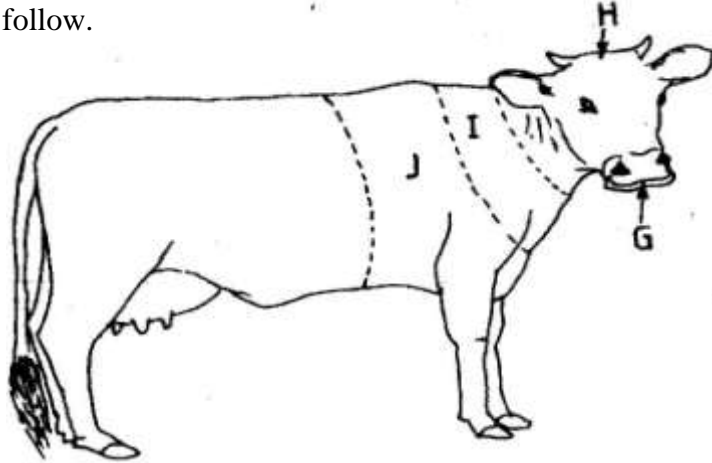
.....  
.....  
.....  
.....

8. **2006 Q22a P2**  
a) Outline the procedure followed when hand spraying cattle to ensure effective use of acaricides to control ticks. (10 marks)

.....  
.....  
.....  
.....  
.....  
.....  
.....  
.....  
.....  
.....  
.....  
.....  
.....  
.....  
.....  
.....  
.....  
.....  
.....  
.....  
.....

9. 2006 Q21 P2

A diagram of a cow is shown below. Study it and answer the questions that follow.



(a) Name the parts labelled G, H, I and J.

.....  
.....  
.....  
.....

(b) Name four parts of the animal preferred by a two host tick. (2 marks)

.....  
.....  
.....  
.....

10. 2007 Q10 P2

Give three effects of external parasites that are harmful to livestock. (1 ½ marks)

.....  
.....  
.....

11. 2008 Q2 P2

State three factors that would determine the effectiveness of an acaricide

.....  
.....

**12. 2008 Q15 P2**

Name four structures which would assist in the control of livestock parasites on a farm

.....  
.....  
.....  
.....

**13. 2008 Q23 P2**

Give two harmful effects of Keds ( Melophagus Orinus) in sheep

.....  
.....

**14. 2009 Q3 P2**

Name one intermediate host for each of the following livestock parasites:

(a) Liver fluke (fascicle spp) (1/2mark)

.....

(b) Tape worms (taenia spp) (1/2mark)

.....

**15. 2009 Q6 P2**

State four harmful effects of tsetse flies (Glossing spp) in livestock (2 marks)

.....  
.....  
.....  
.....

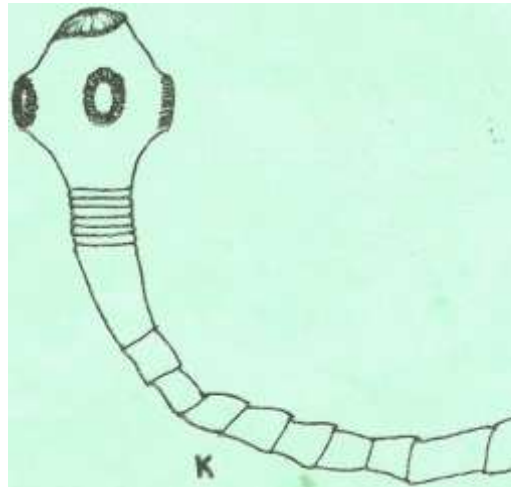
**16. 2009 Q25a P2**

(a) Describe the life cycle of a named tapeworm (Taenia spp) (10 marks)

.....  
.....  
.....  
.....  
.....  
.....  
.....  
.....  
.....

17. 2010 Q22 P2

Below are diagrams of internal parasites. Study them carefully and answer the questions that follow.



(a) Identify the parasites labeled K and L.

.....  
.....

(b) Name the developmental stage of the parasite labeled K in cattle muscles. (1/2 mark)

.....

(c) Outline the procedure of handling a heifer when administering a liquid deworming drug to control the parasites illustrated above. (2 1/2 marks)

.....  
.....  
.....  
.....

18. 2011 Q4 P2

Name one livestock disease that is transmitted by each of the following parasites:

- a) Blue ticks; .....
- b) Brown ear ticks.....
- c) Tsetse flies. ....

19. 2011 Q5 P2

State four methods of controlling round worms (*Ascaris sp*) in livestock.

.....  
.....  
.....

20. 2011 Q15 P2

Name two developmental stages of a liverfluke (*Fasciola sp*) which occur in the fresh water snail (*Limnaea sp*)

.....  
.....

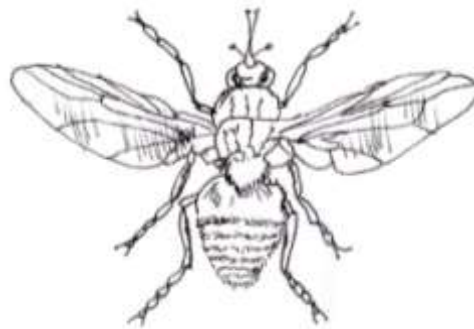
21. 2011 Q26b P2

b) Give five harmful effects of liver flukes in sheep rearing

.....  
.....  
.....  
.....

22. 2012 Q19 P2

The diagram illustrates a livestock parasite



a). Identify the parasite illustrated above (1 mark)

.....  
b). State the major harmful effect of the parasite (1 mark)

c). Explain four control measures for the parasite (4 marks)

.....  
.....

(b) Describe the control measures for tapeworms (*Taenia spp*) in livestock (6 marks)

.....