

INTERNAL LAND FORMING PROCESSES

EARTH MOVEMENTS

1. 1991 Q 3a

a) List three agents of deposition on the surface of the earth

.....
.....
.....

2. 1999 Q 1

Give four proofs that the earth is spherical

.....
.....
.....
.....
.....

3. 2007 Q 5

(a) Name the two types of earth movements that occur within the earth's crust (2 marks)

.....
.....

(b) Describe the origin of the continents according to the Theory of continental Drift (3 marks)

.....
.....
.....
.....

4. 2008 Q 1

a) Give three reasons why it is necessary to study the plate tectonics theory. (3 marks)

.....
.....
.....

b) Name two types of tectonic plate boundaries.

(2 marks)

.....
.....

FOLDING

1. 1993 Q 4b

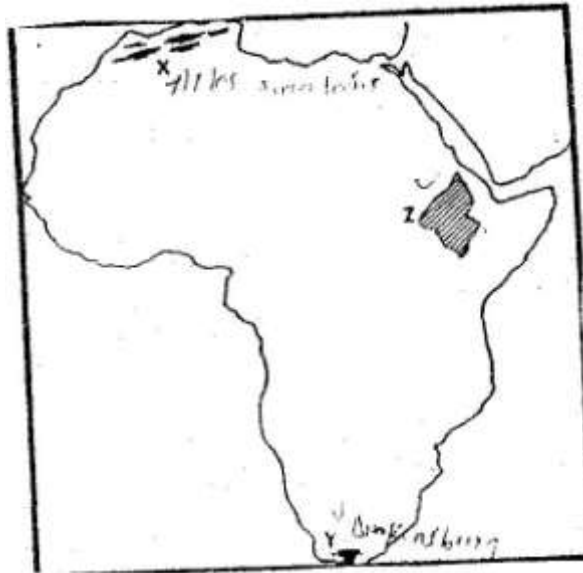
b) With the aid of diagrams, describe how Fold Mountains are formed.

(10 marks)

.....
.....
.....
.....
.....
.....
.....
.....
.....
.....

2. 1998 Q 9

(a) On the outline map of Africa provide, name the features marked X,Y and Z



(b) (i) Name four folds

.....

.....

.....

.....

(ii) With the labelled diagrams, describe the formation of Fold Mountains

b) Name two fold mountains in Africa

.....
.....

4. 2005 Q 8a-c

(a) Name one fold mountain in:

(i) Asia (1 mark)

.....

(ii) North America (1 mark)

.....

(iii) South Africa (1 mark)

.....

(b) (i) Apart from fold mountains, name three other features resulting from folding (3 marks)

.....

.....

.....

(ii) With the aid of a labelled diagram, describe the formation of a thrust fold

(c) Explain four effects of fold mountains on human activities

(8 marks)

.....

.....

.....

.....

.....

.....

.....

.....

.....

.....

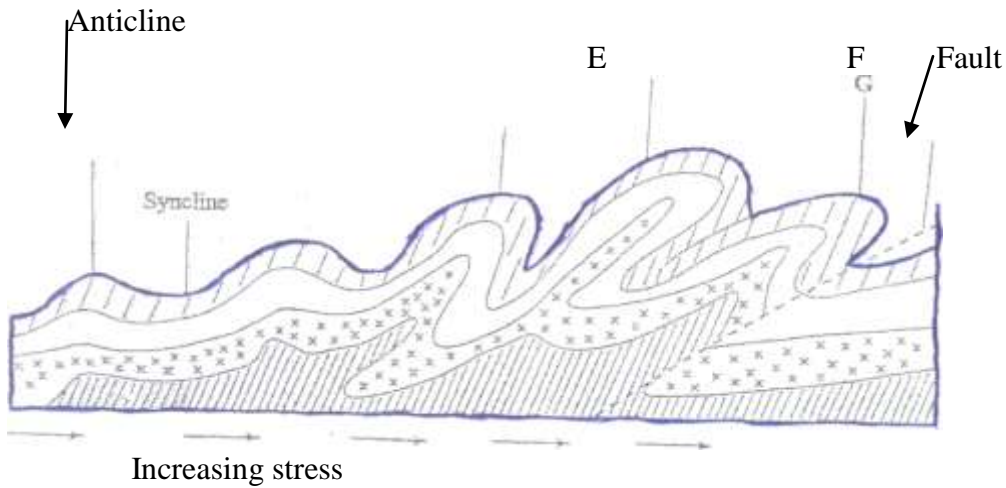
.....

.....

.....

5. 2009 Q 5

The diagram below shows some types- of folds Use it to answer question (a)



(a) Name the types of folds marked E, F and G

(3 marks)

.....

.....

.....

(b) In which countries are the following fold mountains found?

(i) Andes

(1 mark)

.....

(ii) Cape ranges

(1 mark)

.....

(ii) Alps

(1 mark)

.....

6. 2011 Q 8b, c

b) i) Apart from fold mountains, name three other features resulting from folding.

(3 marks)

.....

.....

.....

ii) With the aid of labeled diagrams, describe how Fold Mountains are formed. (10 marks)

.....

.....

.....

.....

.....

.....

.....

c) Explain the significance of Fold Mountains to human activities.

(8 marks)

.....
.....
.....
.....
.....
.....
.....
.....
.....
.....
.....
.....
.....
.....
.....
.....
.....
.....
.....
.....
.....

FAULTING

1. 1994 Q 3 A, B and C

(a) Name three types of faults

.....
.....
.....

(b) (i) With the aid of well labeled diagrams explain how compressional forces can lead to the formation of a rift valley (4 marks)

.....

.....

.....

.....

.....

.....

.....

.....

.....

(ii) Give two examples of horst–mountain in East Africa (2 marks)

.....

.....

(c) Explain two ways in which features resulting from faulting are of economic importance (4 marks)

.....

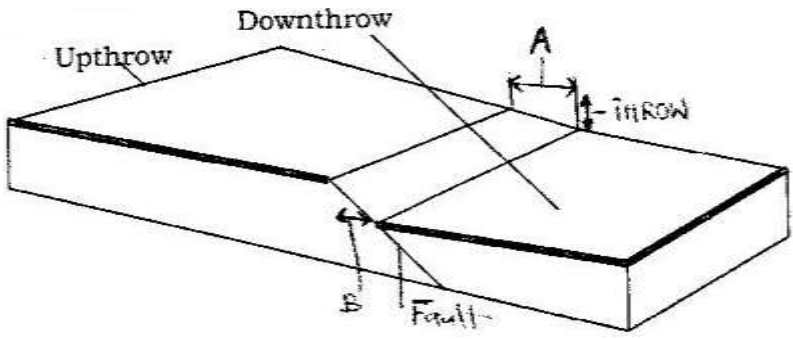
.....

.....

.....

2. 1996 Q 2

The block diagram below represents part of earth’s crust which has been subjected to tensional forces.



a) Name the slope marked A (1 mark)

.....

b) State three ways in which faulting can influence drainage systems. (3 marks)

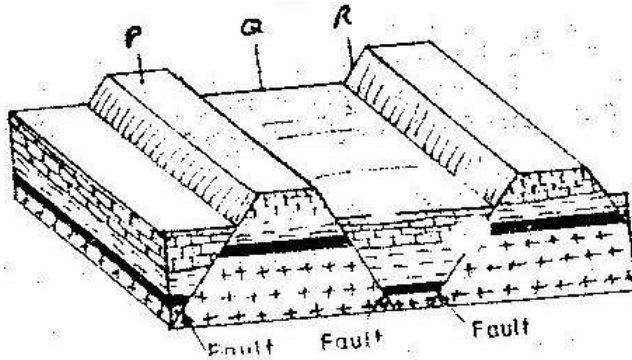
.....

.....

.....

3. 2002 Q 1a, b

The diagram below represents features produced by faulting. Use it to answer questions that follow.



a) Name the features marked P, Q, and R

.....

.....

.....

b) Differentiate between a normal fault and a reverse fault.

.....

.....

.....

.....

4. 2004 Q 7a, b

a) i) A part from the Rift Valley name two other relief features that were formed as result of faulting. (2 marks)

.....

.....

ii) With the aid of a well labelled diagram, describe how a Rift Valley is formed by tensional forces. (8 marks)

.....

.....

.....

.....

.....

.....

.....

.....

.....

.....

b) Explain four effects of faulting (8 marks)

.....

.....

.....

.....

.....

.....

.....

.....

5. 2009 Q 8

(a) (i) Name three types of faults. (3 marks)

.....
.....
.....

(ii) Apart from compressional forces explain two other processes that may cause faulting (4 marks)

.....
.....
.....
.....
.....

(b) With the aid of diagrams, describe how compressional forces may have led to the formation Great Rift Valley (8 marks)

.....
.....
.....
.....
.....
.....
.....

(c) Explain five ways in which faulting is of significance to human activities. (10 marks)

.....

.....

.....

.....

.....

.....

.....

.....

.....

.....

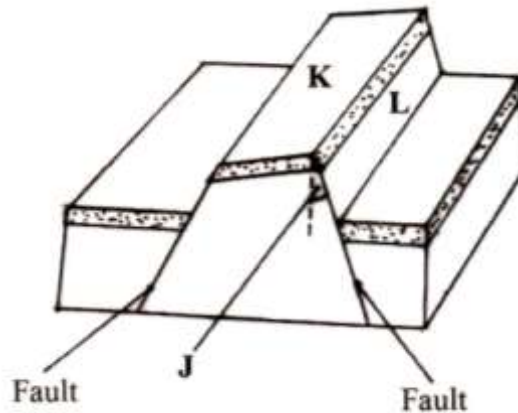
6. 2012 Q4 P2

a) Identify two causes of earth movement (2 marks)

.....

.....

The diagram below shows some features formed as a result of faulting.



b) Identify

i) The angle marked J. (1 mark)

.....

ii) The features marked K and L (2 marks)

.....

.....

VULCANICITY

1. 1996 Q 1a,b

a) List two features resulting from extrusive volcanic activity. (2 marks)

.....
.....

b) State four ways in which vulcanicity has influenced human activities in Kenya. (4 marks)

.....
.....
.....
.....

2. 1998 Q 2

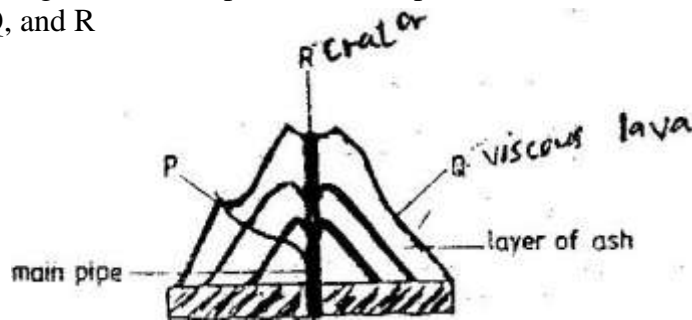
(a) What is magma?

.....
.....

(b) Differentiate between a sill and a dyke

.....
.....
.....

(c) The diagram below represents a composite volcano. Name the features marked P, Q, and R



.....
.....
.....

3. 2000 Q 7a-c

(a) Differentiate between plutonic rocks and volcanic rocks

.....
.....
.....
.....

(b) Describe how lava plateau is formed

.....
.....
.....
.....
.....
.....
.....

(c) (i) Name three volcanic features found in the rift valley of Kenya

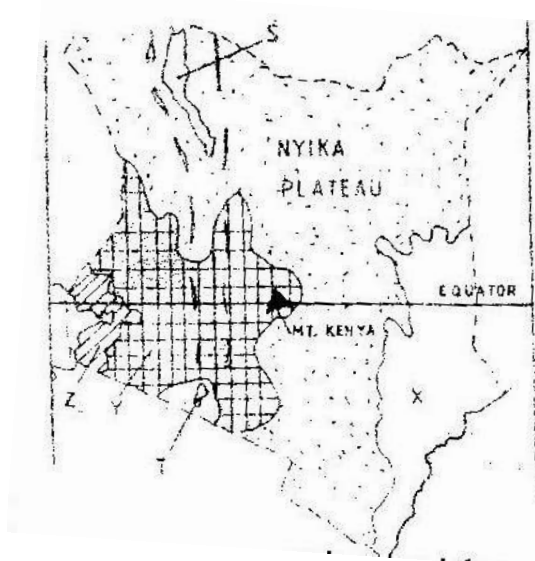
.....
.....
.....

(ii) Explain four negative effects of vulcanicity in Kenya

.....
.....
.....
.....
.....
.....
.....
.....

4. 2002 Q 7a (i),(iii)

The map below shows the physical regions of Kenya. Use it to answer the questions that follow.



a) i) Name the regions marked X,Y and Z

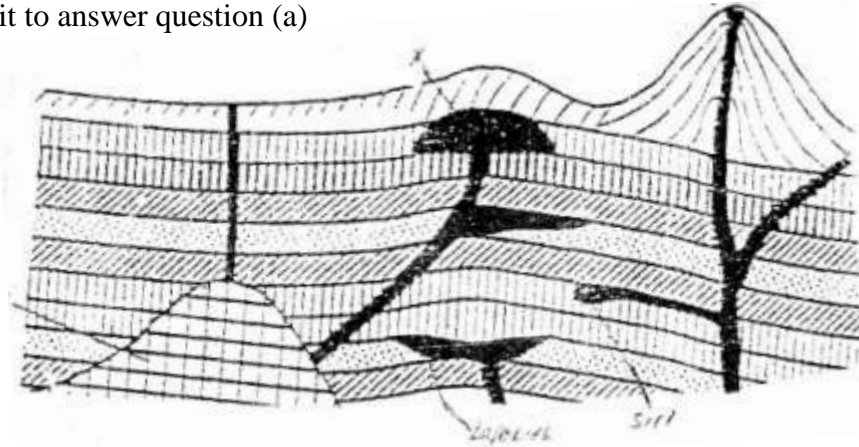
.....
.....
.....

iii) Describe how Mt. Kenya was formed.

.....
.....
.....
.....
.....
.....
.....
.....
.....
.....
.....
.....
.....
.....
.....

5. 2004 Q 9a-c

The diagram below shows some intrusive features formed by vulcanicity. Use it to answer question (a)



a) i) Name features marked X, Y, and Z (3 marks)

.....
.....
.....

ii) Explain how a sill is formed (4 marks)

.....
.....
.....
.....
.....
.....
.....
.....
.....

b) Describe the characteristics of a composite volcano (4 marks)

.....
.....
.....
.....

c) Explain **four** ways in which volcanic mountains positively influence human activities.

.....
.....
.....
.....

6. 2008 Q 7

a) Differentiate between magma and lava (2 marks)

.....
.....
.....
.....

c) Describe how the following features are formed and for each give an example from Kenya: i) crater (3 marks)

.....
.....
.....
.....

ii) geyser (5 marks)

.....
.....
.....
.....
.....

iii) lava plateau (4 marks)

.....
.....
.....
.....

d) Explain four ways in which volcanic features influence human activities. (8 marks)

.....

.....

.....

.....

.....

.....

.....

.....

EARTHQUAKES

1. 1998 Q 3

(a) State three causes of earthquakes

.....
.....
.....

(b) Give two effects of earthquakes in built up areas

.....
.....

2. 2002 Q 9c

(a) (i) What are earthquakes

.....
.....

(ii) Name two types of earthquakes.

.....
.....

(iii) State the five ways in which the earths' crust is affected by earthquakes.

.....
.....
.....
.....
.....

3. 2006 Q 4

(a) Name two scales used to measure the intensity of an earthquake (2 marks)

.....
.....

(b) Give three causes of earthquakes (3 marks)

.....
.....
.....

4. 2010 Q 3

(a) Give **three** causes of earthquakes.

(3 marks)

.....
.....
.....

(b) Name two major earthquake zones of the world.

(2 marks)

.....
.....